

**GILPIN COUNTY  
OFFICIALS**

County Judge  
**Frederic Rodgers**

County Clerk and Recorder  
**Jessica Lovingier**

County Treasurer  
**Alynn Huffman**

County Sheriff  
**Bruce Hartman**

County Assessor  
**Anne Schafer**

County Coroner  
**Zane Laubhan**

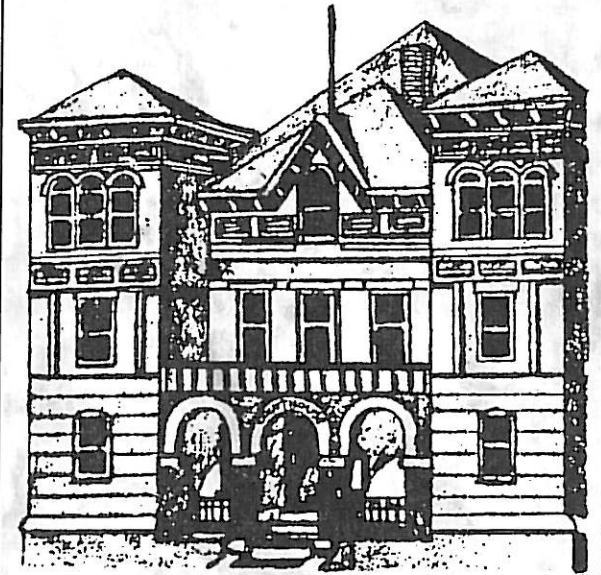
County Attorney  
**Jim Petrock**

**COUNTY  
COMMISSIONERS**

<b>Al Price</b>	<b>1st District</b>
<b>Jeanne Nicholson</b>	<b>2nd District</b>
<b>Forrest Whitman</b>	<b>3rd District</b>

**Abstract of  
Assessment  
of  
Gilpin County, Colorado**

**2007**



**ANNE SCHAFER**  
County Assessor

Central City, Colorado

**Tax To Be Collected  
For Year 2007**

DISTRICT	ASSESSED VALUE	MILL LEVY	TAX
<b>Gilpin RE-1</b>			
General Fund	300,764,891	4.075	1,225,617
Bond Redemption	300,764,891	8.444	2,539,659
Special Funds	300,764,891	0.299	90,017
<b>Total RE-1</b>	<b>300,764,891</b>	<b>12.818</b>	<b>3,855,293</b>
<b>Boulder Valley RE-2</b>			
General Fund	45,864,989	25.023	1,147,680
Bond Redemption	45,864,989	11.199	513,642
Special Funds	45,864,989	1.643	75,356
<b>Total RE-2</b>	<b>45,864,989</b>	<b>37.865</b>	<b>1,736,678</b>
<b>County Funds</b>			
General Fund	346,629,880	7.317	2,536,291
Road & Bridge Fund	346,629,880	0.847	293,596
Public Welfare Fund	346,629,880	0.441	152,864
Retirement Fund	346,629,880	0.709	245,761
Solid Waste	346,629,880	0.282	97,750
Library Fund	346,629,880	0.242	83,884
Abatement	346,629,880	0.060	20,740
<b>Total County Funds</b>	<b>346,629,880</b>	<b>9.898</b>	<b>3,430,866</b>
<b>Miscellaneous Funds</b>			
Black Hawk-Central City			
Sanitation District	255,555,280	0.168	42,933
Coal Creek Fire Dist.	3,770,870	8.000	30,167
Miner's Mesa	2,552,751	4.000	10,211
Colo. Sierra Fire Dist.	14,333,750	8.400	120,404
High Country Fire Dist.	51,836,029	8.439	437,444
Silver Dollar Metro. Dist.	202,798,460	5.320	1,078,888
Central City Business Improvement District	32,203,790	80.000	2,576,303
Black Hawk Business Improvement District	187,733,540	2.299	431,599
<b>Total Miscellaneous Funds</b>	<b>750,784,470</b>		<b>4,727,949</b>
<b>City of Central</b>	<b>40,512,810</b>	<b>9.631</b>	<b>390,179</b>
<b>City of Black Hawk</b>	<b>216,585,941</b>	<b>0.046</b>	<b>10,000</b>
<b>Total Cities</b>	<b>257,098,751</b>		<b>400,179</b>
<b>Total Tax To Be Collected</b>	<b>1,701,142,981</b>		<b>14,150,983</b>

All property, except that specifically exempted by law, is subject to taxation, and it is the responsibility of the owner to see that it is listed with the Assessor.

County Tax is levied by County Commissioners. School Taxes are based from budgets submitted by School Boards, City Taxes are levied by City Officials. Special District Taxes are levied by their Board of Directors. These levies are certified by the Board of County Commissioners and delivered to the Assessor. These levies are compiled and extended to the properties by the Assessor and the tax roll is delivered to the County Treasurer for collection.

**Abstract of Assessment 2007**

DESCRIPTION	ASSESSED VALUE	ACTUAL VALUE
<b>VACANT</b>		
Unimproved	50,975,460	175,767,620
Minor Structures	498,390	1,718,630
<b>TOTAL VACANT</b>	<b>51,473,850</b>	<b>177,486,250</b>
<b>RESIDENTIAL</b>		
Improved	54,696,180	687,124,920
Mobile Homes	22,680	285,110
<b>TOTAL RESIDENTIAL</b>	<b>54,718,860</b>	<b>687,410,030</b>
<b>COMMERCIAL</b>		
Improved - Merchandising	2,712,690	9,353,806
Improved - Lodging	301,890	1,041,001
Improved - Offices	2,356,530	8,126,017
Improved - Recreation	446,460	1,539,530
Improved - Gambling	155,529,400	536,308,350
Improved - Special	24,677,690	85,095,650
Improved - Warehouses	960,600	3,312,544
Partially Exempt	84,670	291,960
Possessory Interest	27,160	93,642
Personal Property	22,601,260	77,935,210
Equipment	13,192,780	45,492,380
<b>TOTAL COMMERCIAL</b>	<b>222,891,130</b>	<b>768,590,090</b>
<b>INDUSTRIAL</b>		
Improved	151,680	522,990
Equipment	2,340	8,070
<b>TOTAL INDUSTRIAL</b>	<b>154,020</b>	<b>531,060</b>
<b>AGRICULTURAL</b>		
Grazing Land - 15,165 Acres	125,850	434,470
Improvements	211,580	729,530
<b>TOTAL AGRICULTURAL</b>	<b>337,430</b>	<b>1,164,000</b>
<b>NATURAL RESOURCES</b>		
Non-Producing	11,043,630	38,045,860
Improvements	142,810	492,230
Equipment	2,550	8,780
<b>TOTAL NATURAL RESOURCES</b>	<b>11,188,990</b>	<b>38,546,870</b>
<b>SUMMARY OF ASSESSMENTS</b>		
Total Vacant	51,473,850	177,486,250
Total Residential	54,718,860	687,410,030
Total Commercial	222,891,130	768,590,090
Total Industrial	154,020	531,060
Total Agricultural	337,430	1,164,000
Total Natural Resources	11,188,990	38,546,870
<b>TOTAL TAXABLE BY ASSESSOR</b>	<b>340,764,280</b>	<b>1,673,728,300</b>
<b>STATE ASSESSED PROPERTIES</b>	<b>5,865,600</b>	<b>20,225,891</b>
<b>GRAND TOTAL ASSESSED VALUATION</b>	<b>346,629,880</b>	<b>1,693,954,191</b>
<b>TOTAL EXEMPT PROPERTIES</b>	<b>27,757,390</b>	<b>95,880,920</b>

**The Assessor does not set the taxes.**

The taxes are computed based upon the levies set by the taxing entities.

2007 taxes are due January 1, 2008.

Taxes may be paid in two equal payments.

To avoid penalties, the first half must be paid on or before February 28th and the second half must be paid on or before June 15th, after which dates interest will be added as provided by law. If the entire annual tax is paid on or before April 30, 2008, no interest will be added. There may be differences due to rounding.

**ANNE SCHAFER, County Assessor    DAURICE McMILLAN, Deputy Assessor**